

FEBRUARY 2023

MERIDIAN RANCH NEWSLETTER

ISSUE NO. 24



**Meridian Service Metro District
Recreation Center Mission:**

To offer a healthy lifestyle for the residents of Meridian Ranch through facilities and programs for personal fitness, group exercise, organized sports, aquatics, and special community events.

MERIDIAN RANCH REC CENTER



**YOUTH
BASKETBALL
LEAGUE**

VOLUNTEER COACHES NEEDED!!

CONTACT: SPORTS@MERIDIANSERVICE.ORG

SEASON STARTS FEBRUARY 21, 2023

GYMNASTICS

AT

MERIDIAN RANCH REC CENTER!

MORE INFORMATION

Coming
Soon

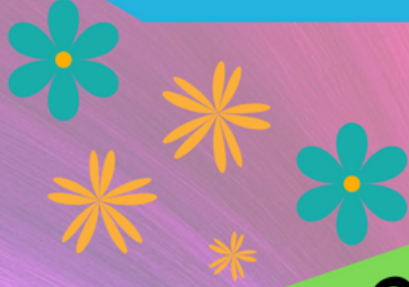


MEET THE COACH!

MY NAME IS ALEXIS TRIBE AND I'M EXCITED TO BE A PART OF MERIDIAN RANCH REC CENTER'S NEW PROGRAM! I STARTED MY GYMNASTICS CAREER AT THE AGE OF 8 AND MADE IT TO THE COMPETITION LEVEL BY THE AGE OF 10. AFTER I FINISHED MY GYMNASTICS JOURNEY, I DECIDED TO SHARE MY KNOWLEDGE AND EXPERIENCE AND BECOME A COACH. I HAVE BEEN COACHING GYMNASTICS FOR ALL AGES AND SKILL FOR THE LAST 3 YEARS. I CURRENTLY TEACH AT PEAK GYMNASTICS SPECIALIZING IN FLOOR GYMNASTICS. I AM GRATEFUL TO CONTINUE MY COACHING PATHWAY, AND TO BE A PART OF THE MERIDIAN RANCH COMMUNITY.

Parent's Night Out

Friday February 10th and 24th



5:30p - 10p
Ages 5 - 12

Residents \$20

Additional Children \$15



Non-Residents \$25

Additional Children \$20

PIZZA
CRAFTS
SNACK
MOVIE

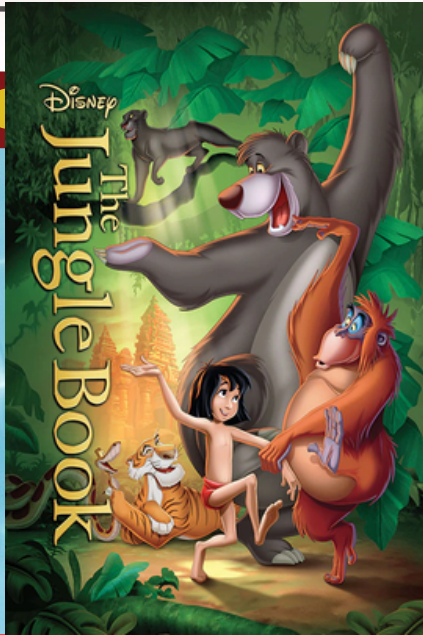


Please only sign up for
one PNO per month.

Sign up in Child Watch

Paperwork is required in advance.

FLICK N' FLOAT



February 18th
6-8PM

You are
the Heart
of Our
Community



MERIDIAN RANCH

THIS
Valentine's
DAY



Give the Gift of Golf

9650 Antler Creek Dr | 719.494.1900 | www.AntlerCreekGolf.com

Love
your Local
Business



JUST the GRINS
DENTAL AND ORTHODONTICS



Splash Bath
llc.



PAPA JOHN'S
INDEPENDENTLY
OWNED & OPERATED



kw ELITE PARTNERS
KELLERWILLIAMS.



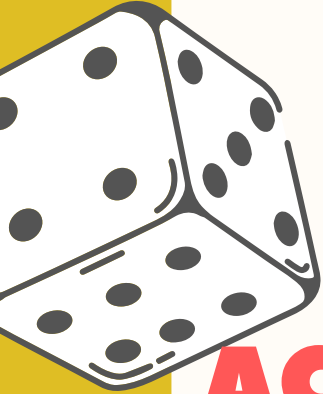
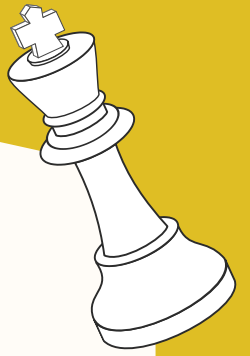
THE Shops
AT MERIDIAN RANCH

Omelets Etc
Family Owned

Coming soon!



MERIDIAN RANCH REC CENTER



ACTIVE OLDER ADULTS



GAME DAY

Spare Your Time for Fun

Thursdays
1pm-2:30pm
at MRRC Auditorium



Games to Play
BOARD GAMES & CARD GAMES



MANAGER'S MESSAGE

Winter Driving

Please remember that snow and ice conditions will continue through the spring, and make appropriate preparations. Please be patient while driving in the snow; every year the District's landscaping and irrigation systems are damaged when drivers go outside the roadway to pass vehicles stranded in snow (especially on Londonderry Drive near the Recreation Center). Driving outside the roadway is illegal, and the damage to our landscaped grounds is expensive. If you witness this happening, please report the vehicle license number and description of the driver to the District using the "Contact Us" form on the District's website.

Frozen Ponds

Keep away from frozen ponds, and instruct your children to keep away, as well – they are dangerous places to play.

Snow Removal

Residents are responsible for removing snow from sidewalks adjacent to their properties, including sidewalks along side yards of corner lots. The District removes snow from the District - maintained walking trails within District landscaped areas, parks, and open space. If there's a lot of snow, try not to push it into the road - if El Paso County's plows come through, they'll push the snow back on to your driveway or sidewalk. If you have questions about your snow removal responsibilities, or if you think the District missed an area, please call our office.

How to get Additional Information

As always, you can learn much about our community and the District that serves you by checking our website at www.meridianservice.org . You can also call our office at 719-495-6567 or stop by in person (we're in The Shops at Meridian Ranch, 11886 Stapleton Drive).

Jim Nikkel, General Manager

Meridian Service Metropolitan District – Water, Sewer, Drainage, Parks, Recreation

www.meridianranchmetro.org

GOLF MEMBERSHIPS

A-List Prime Membership

- Unlimited Golf any day.
- Includes Shared Cart.
- Receive a 25% discount on logo merchandise.
- 8 Day advance tee times.
- Invited to participate in A-List only tournaments.

Non-Prime membership level available



A-List PRIME

\$220/month (Single)
\$300/month (Couple)
\$340/month (Family)



A-List NON-PRIME

\$170/month (Single)
\$235/month (Couple)
\$270/month (Family)

Stonebridge

Reservations

The form can be found in the portal under forms – Lodge Reservation, or owners can stop by the lodge and visit with Estelle to pick up a form. Weekends are filling up fast, so if you are planning to utilize the lodge, please check out the amenity calendar in the portal.

Children

Please note, children under 14 must be accompanied by an adult, they cannot be in the lodge by themselves. We understand the bus drops off children at the lodge, but this is not for them to stop by on Tuesday's, Thursday's or Friday's to be hanging out without an adult.

Backyard

The backyard of the Stonebridge lodge is not a dog park! We have had several instances where there are dogs without leashes and owners using this area as their own dog park. The HOA has requested for additional dog stations be added to the walking trail by Stonebridge lodge to be utilized for walkers with dogs.

The 2023 Board of Directors Election is official! The following officers were appointed at the Board meeting on January 20, 2023.

Kevin Cavanagh – President
Andrew Faeth – Vice President
Jeff Lavender – Treasurer
Jewelie Hathaway- Vires – Secretary
Bret Haycock – Member at Large

Portal updates:

<https://portal.warrenmgmt.com/?c=95> Documents; governing documents (Design Guidelines, Bylaws, Covenants

Payments of the Assessments can be taken care of through the portal.



Estelle is onsite Tuesdays, Thursdays, and Fridays from 10-5 – pick up key cards, review the calendar for reservations, or have questions answered which pertain to the Lodge.

Estelle - estelle@warrenmgmt.com – P: 719-694-9563

Questions about improvements, governance, or selling? Please contact Jamie or Josh at Warren Management Group; Email: stonebridge@warrenmgmt.com P: 719-685-8743

Meridian Ranch

DRC 1 & 2



Winter Watering

While we have experienced an abnormally wet month, with good snowfall, you still want to pay attention to your landscaping to ensure your trees and shrubs are getting enough water. Remember that when the temperatures reach 45 degrees or warmer it is nice to give the shrubs, trees, and grass a drink of water. It is advised by professional landscapers to water approximately one minute per shrub and 2-3 minutes per tree. Some trees do better with a slow drip (a 5-gallon bucket with a small hole drilled into the side works great!), but you will want to speak to a nursery worker to find out what will work best for your trees. You can also move the snow from your walkways and driveway to the base of your trees or around your shrubs to insulate them during the cold and slowly water them as the weather warms. This is especially helpful if you have areas of your landscaping that do not get a good snowpack after a storm. It is not recommended to use snow from the sidewalk to water plants as this snow can often have chemicals from ice melt products which can harm your plants.

It is crucial to winter water your evergreens such as pine and spruce trees since not watering can lead to plant damage. Remember, all front yards in Meridian Ranch have a minimum requirement for trees and shrubs, and if you lose them to winter kill, then they will need to be replaced in the spring. You can find the requirements for your Lot in Section 5.2 of the DRC 1 Design Guidelines or Section 6.2 of the DRC 2 Design Guidelines.

Once the plants have received a good watering, they will also appreciate getting mulch around them. Now is a good time to assess your hardscape and replenish the mulch on your property. Your plants will appreciate it too, as it helps keep the moisture in the ground. Replenish mulch beds with mulch that is natural in color, with no added pigment.



Questions? Please contact your Meridian Ranch DRC Management Team:
Jamie Adams, CMCA, AMS, PCAM – Managing Agent – Jamie@warrenmgmt.com
Chaylyn Petrik, Design Review Coordinator- DRC@meridianranchdrc.org
Julie Sampson, Governance Coordinator – GovernanceDRC1@meridianranchdrc.org
Hannah Shea, Governance Coordinator – GovernanceDRC2@meridianranchdrc.org



MERIDIAN RANCH

DESIGN REVIEW COUNCIL NO. 1



WARREN

MANAGEMENT GROUP AAMC
Accredited Association Management Company



MERIDIAN RANCH

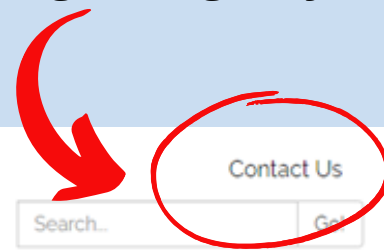
DESIGN REVIEW COUNCIL NO. 2



If you have something to report to Meridian Service Metro District, you can use our website any time – just click the “Contact Us” link on the top right of our homepage at www.meridianservice.org. District staff do not regularly monitor social media accounts, and they can provide better service if residents report directly to them via the website. And always remember, if it’s a life-threatening emergency, call 911.




Meridian Service Metropolitan District



Home Water ▾ Wastewater ▾ Parks & Recreation ▾ Governance ▾ News & Info ▾ About the District ▾



QUICKLINKS

 PAY YOUR BILL

Still need to set up your Meridian Ranch Recreation Center online portal?

Stop by the Meridian Ranch Recreation Center front desk to make sure your account is up to date and your email is on file.

THEN, go to meridianranch.clubautomation.com

Scroll down to the section labeled "First time here?" and click on the "Access My Account" icon.

This will then prompt you to fill out your first name, last name, and email. Once this is done and Club Automation was able to locate you in the system, an email will be sent to you to prompt you to complete your online portal set up.

Questions or issues? Call 719-495-7119 or stop by MRRC front desk.

Meridian Ranch Community Directory

MSMD Board of Directors:

President:

Butch Gabrielski

Meridian Ranch Recreation Center

Phone: 719-495-7119

mrrc@meridianservice.org

Secretary/Treasurer:

Wayne Reorda

MSMD Office:

Phone 719-495-6567

Assistant Secretary/Treasurer

Bill Gessner

Mike Fenton

Tom Sauer

www.meridianservice.org

www.meridianranch.com

www.stonebridgecoloradosprings.com

Meridian Ranch DRC Management Team:

Jamie Adams, CMCA, AMS, PCAM – Managing Agent – Jamie@warrenmgmt.com

Julie Sampson, Governance Director – meridianranch@warrenmgmt.com

Chaylyn Petrik, DRC Administrator- meridianranch2@warrenmgmt.com

Governing Documents can be found on the website:

DRC No. 1 & DRC No. 2 - portal.warrenmgmt.com/ ; **Resources;**
Governing Documents

Follow us on



Hours of Operation

Meridian Ranch Recreation Center

Mon-Fri 5:30 AM - 8:30 PM

Saturday: 8 AM - 6 PM

Sunday: 9 AM - 5 PM

MSMD Office

Mon-Fri 8 AM - 4:30 PM